



Quick Start Guide for Local App Access

XenApp Server Configuration

1. Install XenApp 6.5 on a Windows 2008 R2 server.
2. On the XenApp server, publish the server desktop and give users access to it.
3. Download the Local App Access server hotfix from the Local App Access download page.
4. Install the Local App Access server hotfix on the XenApp server.
5. Reboot when prompted.

Web Interface Configuration

1. Create XenApp Web or XenApp Services sites, as appropriate for your environment.
2. On the Web Interface server, locate the **default.ica** file for each of the sites created in step 1.
3. In the [Application] section, add the following lines:
RTWIMode=On
ClientHostedAppsShortcuts=1
4. Locate the **webinterface.conf** file for each of the sites created in step 1 and set the following value:
ShowDesktopViewer=On

Client Machine Configuration

1. Remove any existing Citrix Receiver installations.
2. Download the Citrix Receiver package that is provided on the Local App Access download page.
3. Install the Citrix Receiver from the command-line using one of the following commands:
CitrixReceiver.exe ALLOW_CLIENTHOSTEDAPPSSHORTCUTS=1
or
CitrixReceiverEnterprise.exe ALLOW_CLIENTHOSTEDAPPSSHORTCUTS=1
4. If you choose to install the Citrix Receiver without specifying the parameters in Step 3, you can enable the feature after installation by editing the following registry values on the client machine:

HKLM Locations:

32-bit Client Machine

- Key location: HKLM\Software\Citrix\ICA Client\Engine\Lockdown Profiles\All Regions\Lockdown\Virtual Channels\Control\
• Key name: ClientHostedAppsShortcuts
• Value: * (asterisk)

64-bit Client Machine:

- Key location: HKLM\Software\Wow6432Node\Citrix\ICA Client\Engine\Lockdown Profiles\All Regions\Lockdown\Virtual Channels\Control\
• Key name: ClientHostedAppsShortcuts
• Value: * (asterisk)

- Key name: ClientHostedAppsShortcuts
- Value: * (asterisk)

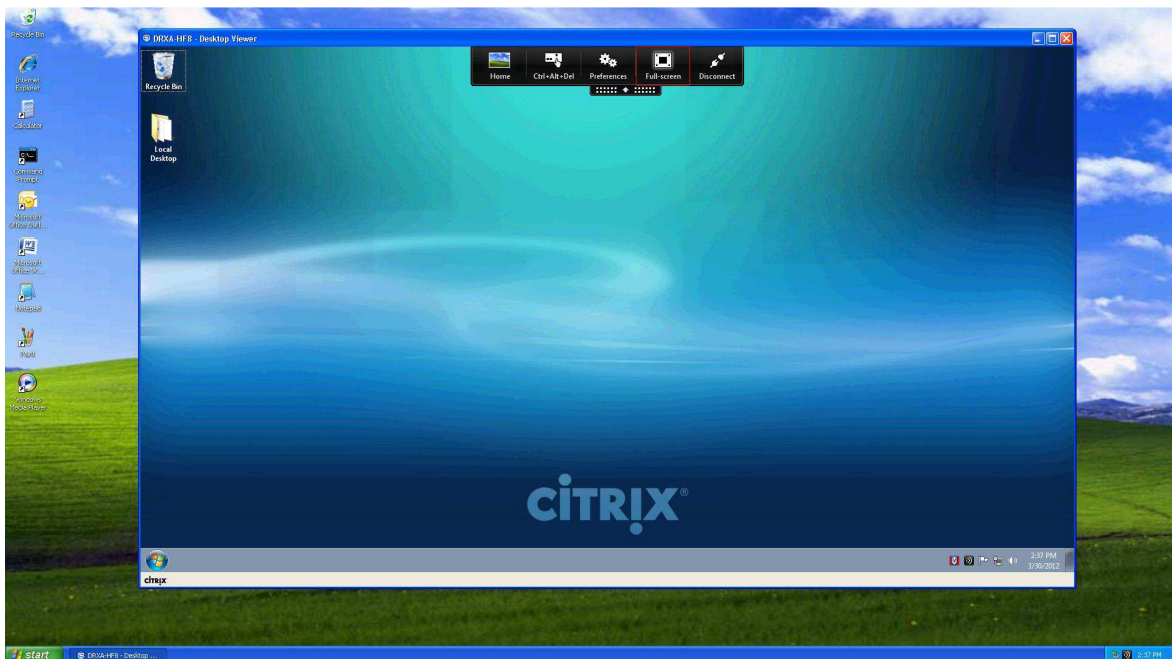
HKCU Location:

32-bit and 64-bit Client Machines:

- Key location: HKCU\Software\Citrix\ICA Client\Engine\Lockdown Profiles\All Regions\Lockdown\Virtual Channels\Control\
- Key name: ClientHostedAppsShortcuts
- Value: TRUE

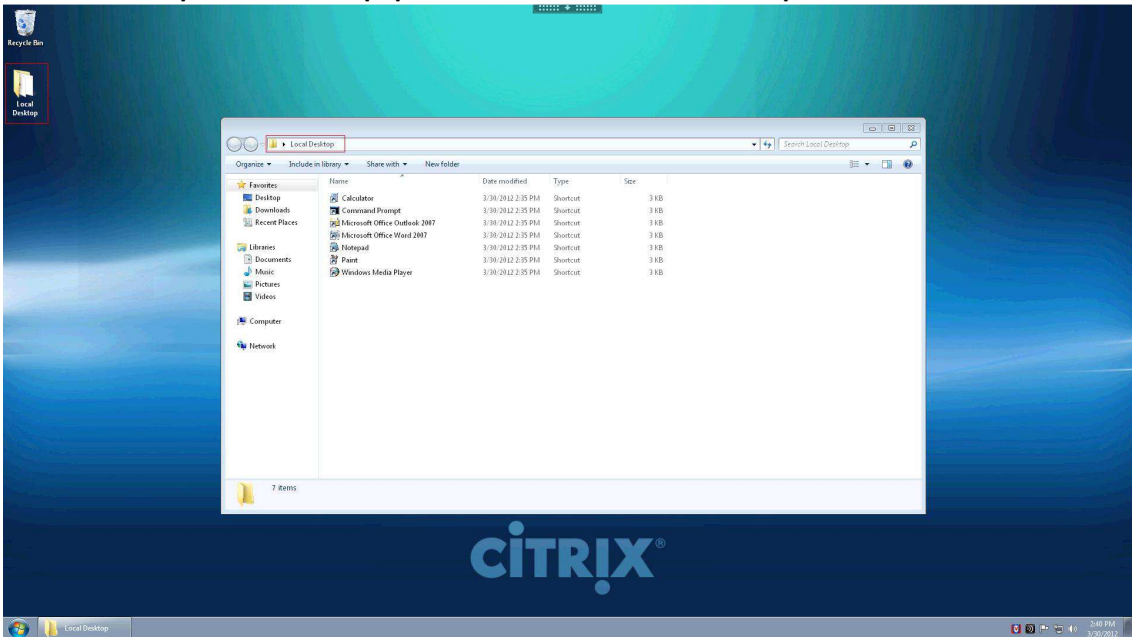
Making the 1st connection

1. From the endpoint device, connect to your XenApp server desktop with one of the assigned users.
2. When the Desktop Viewer window is launched, make sure to change it to “Full Screen” mode. If connecting from an endpoint that is connected to multiple monitors, Desktop Viewer must be maximized across all monitors.



3. By default, the shortcuts from the endpoint's Desktop and Programs menu will be enumerated within the XenApp server desktop.

Desktop shortcuts are populated within the “Local Desktop” folder:



Programs menu shortcuts are populated within the “Local Programs” folder:

